

FlySentry™

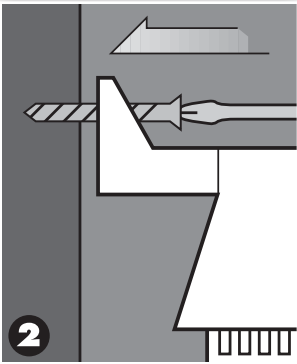


Congratulations on your purchase!

By reading this brief instruction sheet, you can be assured your FlySentry™ unit will be long lasting and control your fly problem as never before. Created by pest control professionals, FlySentry provides a high level of effectiveness that is sustained and consistent.

While FlySentry is a rugged, robust device made of high-impact plastic, it can be damaged if bumped by livestock. FlySentry is not responsible for damage resulting from animal contact or other forms of misuse.

FlySentry uses modern granular fly baits, which are not included. Please purchase bait separately.



REQUIRED TOOLS

FlySentry can be installed using two included screws or mounted on a metal pole using two zip ties, not included.

For installation, you will need a tape measure, screwdriver and granular fly bait. (FlySentry units do not include bait. Please purchase separately.)

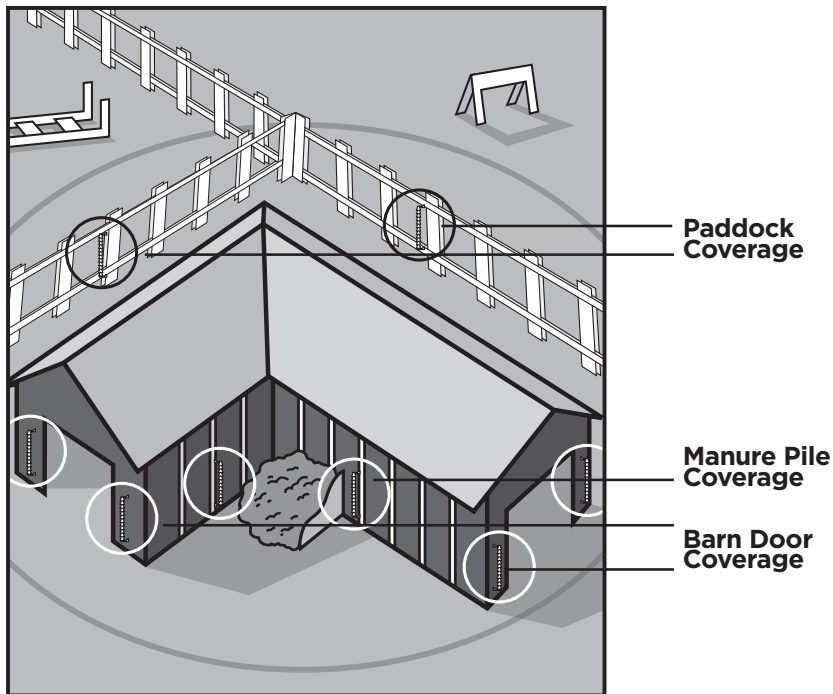
SYSTEM INSTALLATION

(CAUTION: Over-tightening the screw may break the plastic mounting bracket.)

1. Install top screw at desired height. *(For best results, silo tops should reach no higher than 42" above ground.)*
2. Hang unit on top screw.
3. Install bottom screw and tighten. *(Do not over tighten.)*
4. Tighten top screw. *(Do not over tighten.)*
5. Snap out top cap.
6. Place a bucket under the silo.
7. Make sure bait tray is seated inside unit.
8. Pour granular fly bait into the top of the silo, automatically filling the tray.
9. Lift bait tray by the funnel and allow fly bait in center tube to empty into the bucket. *(This step saves bait and prevents bait overflow.)*
10. Snap top cap back on.



Placing FlySentry™ Silos: Create a Perimeter of Defense



BUILD LAYERS OF DEFENSE

The first rule is to remember that FlySentry attracts flies. Therefore, never put FlySentry inside a structure without additional silos located outside of the area to be defended. These outside silos should be located where active egg laying is taking place; i.e. manure piles, dumpsters, etc. Additional silos should be placed every 50 feet around the area requiring fly protection.

REFILLING INSTRUCTIONS

To refill your FlySentry unit, simply follow the installation instructions above.

MAINTENANCE AND CLEANING

For maximum effectiveness, check the FlySentry units at least monthly during fly season and add bait as needed. In times of extremely hot temperatures and high humidity, bait may partially liquefy and/or solidify. In this case, remove the bait tray, clean by immersing in water, and replace fly bait.

Fly Habitat Basics:

Between 0-12" above ground

Females are feeding and looking for a place to lay eggs.

Between 12" - 42" above ground

Active fly feeding zone.

Approximately 42" above ground

Flies are resting not feeding.

www.flysentry.com

NOTE: Replacement bait trays are available for purchase.

© 2009 Spencer Abatement Services, LLC. All Rights Reserved, FLYSENTRY™ PATENT 11/437,869